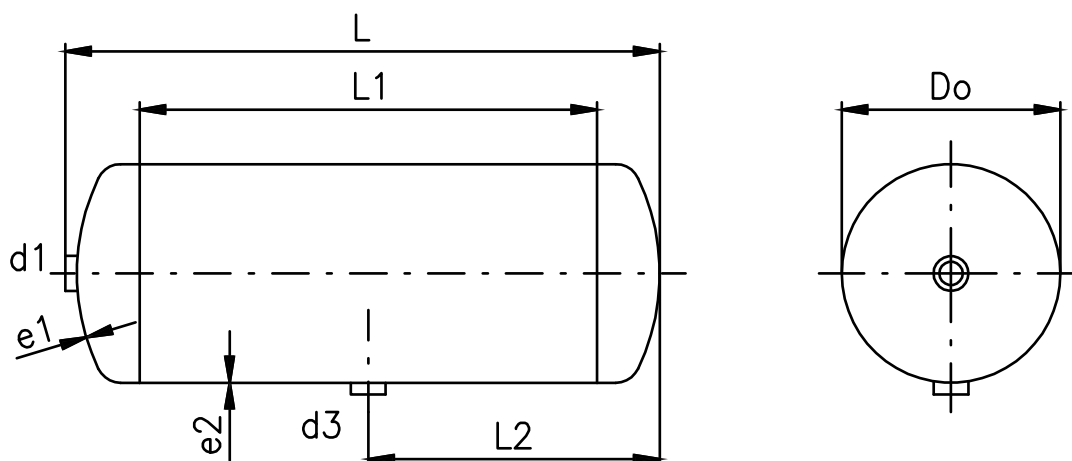


TYP X



Ø102 mm

Číslo	Do	Objem	d1	d2	d3	L	L1	L2	L3	e1	e2	Hmot.
298	102	2,2	G1/2"	-	G1/2"	341	258	176		3	3,6	3,5
300	102	2,5	G1/2"	-	G1/2"	385	302	187		3	3,6	4,1
302	102	1	G1/2"	-	G1/2"	171	88	91		3	3,6	2,2
303	102	1,5	G1/2"	-	G1/2"	243	160	127		3	3,6	2,8
304	102	3	G1/2"	-	G1/2"	455	372	233		3	3,6	4,4
305	102	0,9	G1/2"	-	G1/2"	157	74	84		3	3,6	1,8
306	102	0,8	G1/2"	-	G1/2"	143	60	77		3	3,6	1,7
307	102	1,7	G1/2"	-	G1/2"	271	188	141		3	3,6	2,8
308	102	2	G1/2"	-	G1/2"	313	230	162		3	3,6	3,5

Ø150 mm

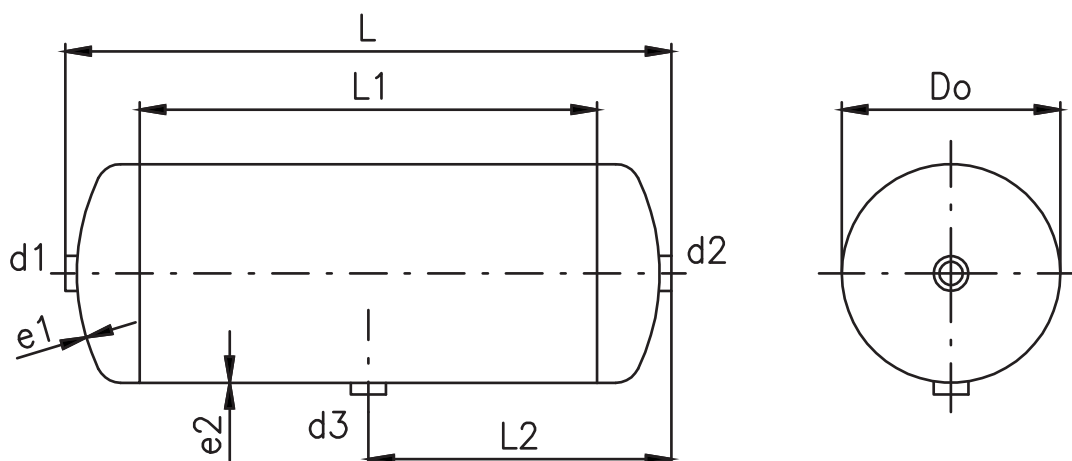
Číslo	Do	Objem	d1	d2	d3	L	L1	L2	L3	e1	e2	Hmot.
187	150	5	G1/2"	-	G1/2"	347	232	172		4	4	6,5
419	150	5	G1"	-	G1/2"	349	232	172		4	4	6,5

Ø250 mm

Číslo	Do	Objem	d1	d2	d3	L	L1	L2	L3	e1	e2	Hmot.
147	250	15	G3/4"	-	G3/4"	381	224	197		4	4	12,2

VŠECHNY NÁDOBY LZE VYROBIT JAK VE VARIANTĚ Z UHLÍKOVÉ OCELI, TAK VE VARIANTĚ Z NEREZOVÉ OCELI.
 VÝROBCE: INVEKTA S.R.O. VLKOV 71, LITOMÝŠL 570 01, ČESKÁ REPUBLIKA.
 TEL: +420 461 353 331, E-MAIL: INVEKTA@INVEKTA.CZ WWW.INVEKTA.CZ

TYP A



Ø200 mm

Číslo	Do	Objem	d1	d2	d3	L	L1	L2	L3	e1	e2	Hmot.
280	200	10	G1"	G1"	G1/2"	408	258	204		4	4	9,4
366	200	9	G1"	G1"	G1/2"	374	224	187		4	4	9,3
452	200	14	G1"	G1"	G1/2"	546	396	273		4	4	12,7
498	200	40	G1"	G1"	G1/2"	1450	1300	710		4	4	30,6
530	200	8,5	G1"	G1"	G1"	353	203	163		4	4	8,8
801	200	20	M22x1.5	M22x1.5	M22x1.5	726	588	363		4	3	13,0

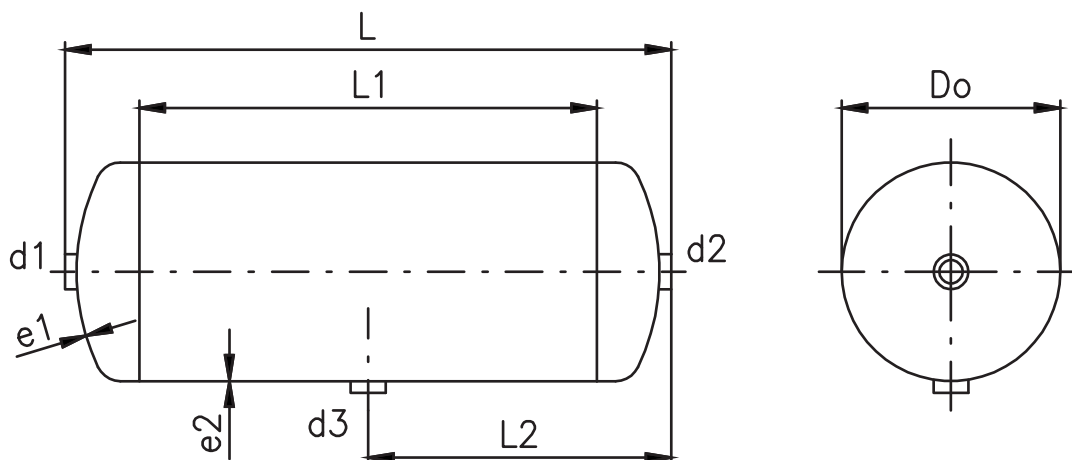
Ø250 mm

Číslo	Do	Objem	d1	d2	d3	L	L1	L2	L3	e1	e2	Hmot.
109	250	25	G1"	G1"	G1/2"	616	446	308		4	4	17,1
639	250	15	G1"	G1"	G1"	383	210	180		4	4	12,2

Ø300 mm

Číslo	Do	Objem	d1	d2	d3	L	L1	L2	L3	e1	e2	Hmot.
131	300	40	G1"	G1"	G1/2"	678	486	339		4	4	23,4
169	300	75	G1"	G1"	G1/2"	1202	1010	601		4	4	38,2
456	300	25	G1"	G1"	G1/2"	452	260	226		4	4	16,6
555	300	67	G1"	G1"	G1/2"	1080	888	540		4	4	35,4
602	300	60	G1 1/2"	G1 1/2"	G1"	988	786	494		4	4	32,4

TYP A



Ø350 mm

Číslo	Do	Objem	d1	d2	d3	L	L1	L2	L3	e1	e2	Hmot.
531	350	100	G1"	G1"	G1"	1160	941	251		4	4	44,4
532	350	125	G1"	G1"	G1"	1444	1224	251		4	4	54,3
538	350	75	G1"	G1"	G1"	911	691	251		4	4	34,2
616	350	75	G1"	G1"	G1"	911	695	456		4	4	34,2
626	350	125	G1"	G1"	G1/2"	1444	1228	722		4	4	56,3
647	350	75	G1/2"	G1/2"	G1/2"	906	695	453		4	4	35,6

Ø400 mm

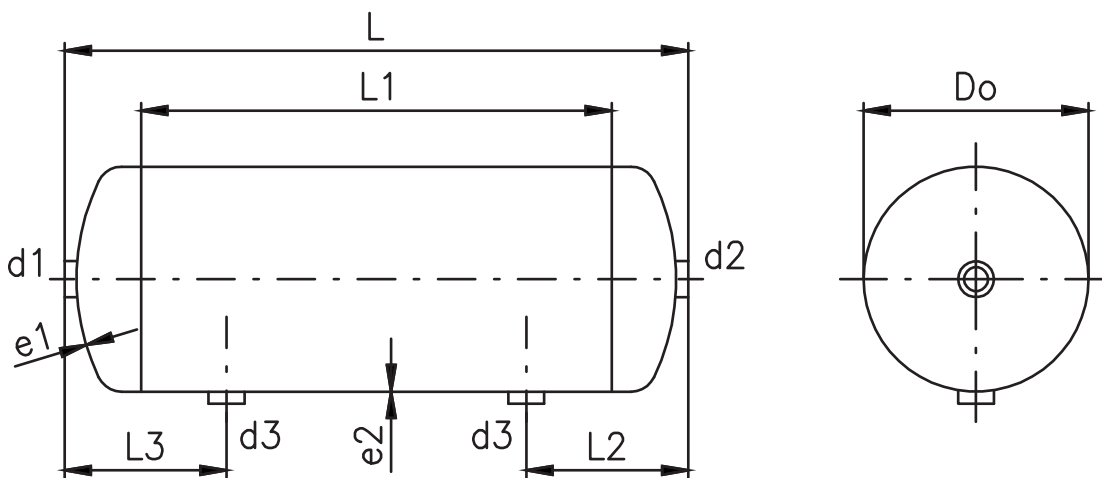
Číslo	Do	Objem	d1	d2	d3	L	L1	L2	L3	e1	e2	Hmot.
121	400	100	G1"	G1"	G1/2"	932	696	463		5	4	43,5
365	400	150	G1"	G1"	G1/2"	1340	1104	670		5	4	61,1
405	400	120	G1"	G1"	G1/2"	1096	860	545		5	4	51,1
429	400	125	G1"	G1"	G1/2"	1130	901	565		5	4	52,0
473	400	75	G1"	G1"	G1/2"	725	489	358		5	4	36,2

Ø500 mm

Číslo	Do	Objem	d1	d2	d3	L	L1	L2	L3	e1	e2	Hmot.
102	500	200	G1"	G1"	G1"	1166	880	583		5	4	69,7
413	500	150	G1"	G1"	G1/2"	900	621	454		5	4	56,4
504	500	250	G1"	G1"	G1"	1432	1146	246		5	4	82,0
529	500	160	G1"	G1"	G1/2"	956	670	478		5	4	58,9

VŠECHNY NÁDOBY LZE VYROBIT JAK VE VARIANTĚ Z UHLÍKOVÉ OCELI, TAK VE VARIANTĚ Z NEREZOVÉ OCELI.
 VÝROBCE: INVEKTA S.R.O. VLKOV 71, LITOMÝŠL 570 01, ČESKÁ REPUBLIKA.
 TEL: +420 461 353 331, E-MAIL: INVEKTA@INVEKTA.CZ WWW.INVEKTA.CZ

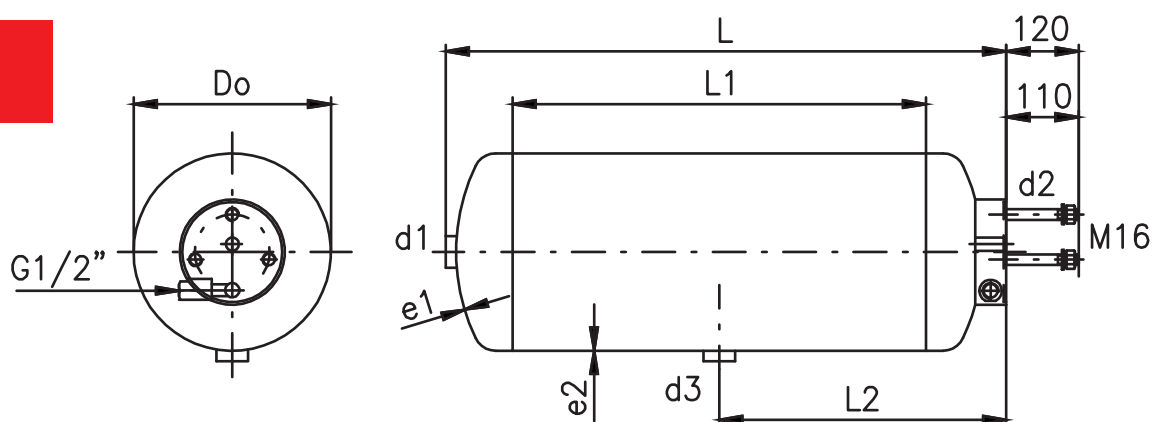
TYP B



Ø500 mm

Číslo	Do	Objem	d1	d2	d3	L	L1	L2	L3	e1	e2	Hmot.
412	500	300	G6/4"	G6/4"	G1"	1707	1416	369	369	5	4	95,9
441	500	420	G6/4"	G6/4"	G1"	2337	2047	519	519	5	4	127,2
502	500	500	M56x2	M56x2	G1"	2766	2470	268	268	5	4	149,1
525	500	500	G1"	G1"	G1"	2746	2468	264	264	5	4	148,9

TYP C

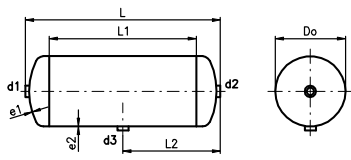


Ø300-500 mm s DAKO příruba

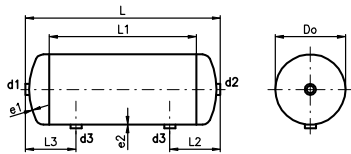
Číslo	Do	Objem	d1	d2	d3	L	L1	L2	L3	e1	e2	Hmot.
110	500	230	G1"	DAKO	G1"	1345	1039	410		5	4	83,2
141	400	100	G1"	DAKO	G1/2"	952	696	490		5	4	52,4
340	300	25	G1"	DAKO	G1/2"	474	259	248		4	4	24,5
411	300	75	G1"	DAKO	G1/2"	1224	1010	623		4	4	46,9
586	400	135	G1"	DAKO	G1"	1241	985	400		5	4	60,0

VŠECHNY NÁDOBY LZE VYROBIT JAK VE VARIANTĚ Z UHLÍKOVÉ OCELI, TAK VE VARIANTĚ Z NEREZOVÉ OCELI.
 VÝROBCE: INVEKTA S.R.O. VLKOV 71, LITOMYŠL 570 01, ČESKÁ REPUBLIKA.
 TEL: +420 461 353 331, E-MAIL: INVEKTA@INVEKTA.CZ WWW.INVEKTA.CZ

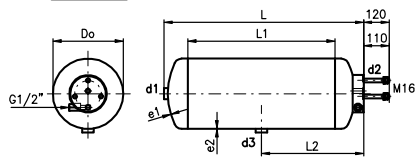
Typ A



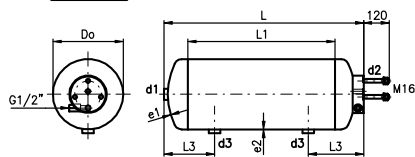
Typ B



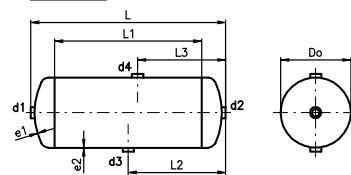
Typ C



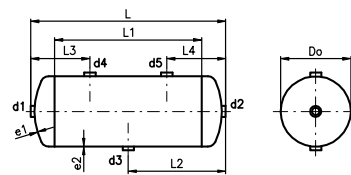
Typ D



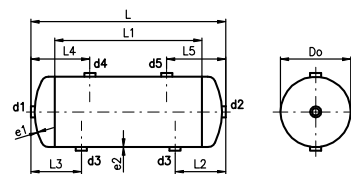
Typ E



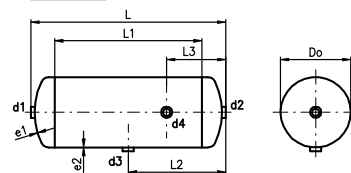
Typ F



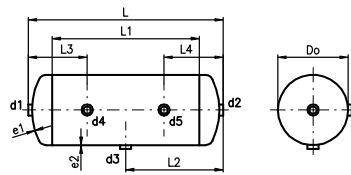
Typ G



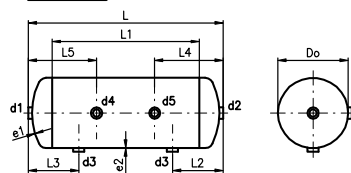
Typ H



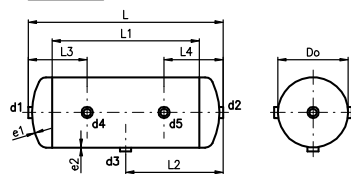
Typ I



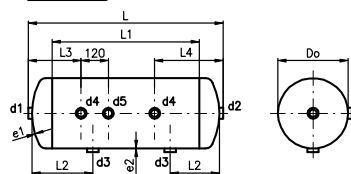
Typ J



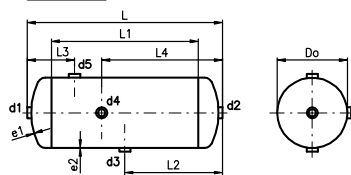
Typ K



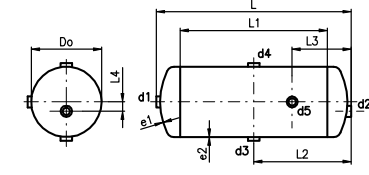
Typ L



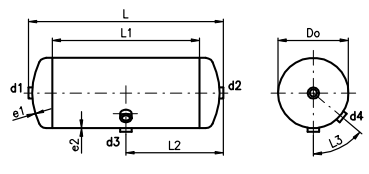
Typ M



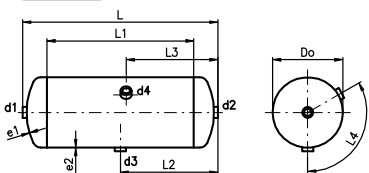
Typ N



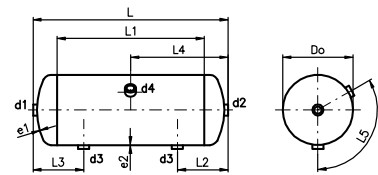
Typ O



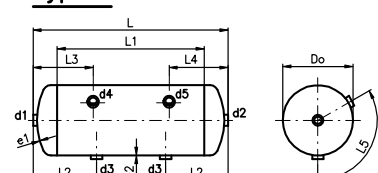
Typ P



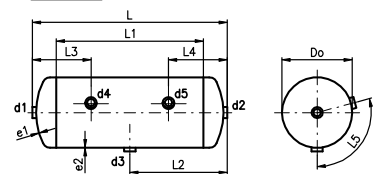
Typ Q



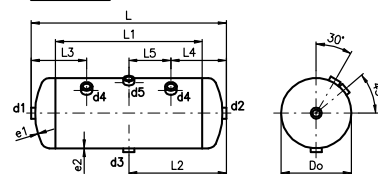
Typ R



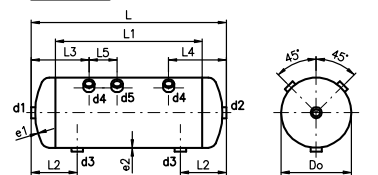
Typ S



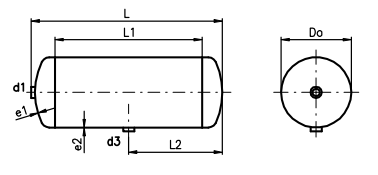
Typ T



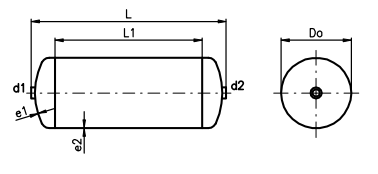
Typ U



Typ X



Typ Y



Typ Z

